



The Signature of Quality®

2021 PRICE LIST



The Leader In Fresh Food Merchandising



The Signature of Quality

Index

BAKERY/DELI SERVICE

Page 1 Italian Glass

SELF-SERVICE

Page 2 Italian Glass Refrigerated Self-Serve

BAKERY/DELI SERVICE

Page 3-4 Market Series

Page 5-6 Series 90

Page 7-8 Curved Glass

Page 9-10 High Volume

SELF-SERVICE

Page 11 Low Profile Self-Serve

Page 12-14 High Profile Self-Serve

Page 15 High Profile (Slim Line)

Page 16-19 Multi-Deck and Island

Page 20 End Cap Self-Serve Merchandiser

Page 21 Wall Display Non Refrigerated Self-Serve

Page 22 Hybrid

Page 23 Convertible Service

Page 24 Self-Serve Prepared Food

Page 25-26 Versatile Service Top Over Refrigerated

Page 27 Sandwich or Salad Prep and Undercounter

Continued on next page >



The Signature of Quality

Index

COUNTERTOP

Page 28 Countertop

CONFECTION

Page 29 Chocolate/Confection

ELEMENTS

Page 30 Bakery/Deli, Countertop, Grab and Go, Island

 Cold Cases

 Hot Cases

 Non-Refrigerated Cases



The Signature of Quality

2021 Price List

Italian Glass Series

BAKERY AND DELI SERVICE CASES

MODEL	DESCRIPTION (L X D X H)	ELECTRICAL	SHIP WEIGHT	LIST PRICE
-------	-------------------------	------------	-------------	------------

REFRIGERATED ❄️

ITR3626-B18	36" x 30.75" x 44"	120/60/1	625	\$ 22,409
ITR4826-B18	48" x 30.75" x 44"	120/60/1	680	23,589
ITR6026-B18	60" x 30.75" x 44"	120/60/1	820	24,770
ITR3634-B18	36" x 30.75" x 52"	120/60/1	650	23,351
ITR4834-B18	48" x 30.75" x 52"	120/60/1	820	24,765
ITR6034-B18	60" x 30.75" x 52"	120/60/1	930	26,158

NON-REFRIGERATED N°

ITD3626-B18	36" x 30.75" x 44"	120/60/1	550	13,884
ITD4826-B18	48" x 30.75" x 44"	120/60/1	640	14,582
ITD6026-B18	60" x 30.75" x 44"	120/60/1	815	15,114
ITD3634-B18	36" x 30.75" x 52"	120/60/1	575	14,582
ITD4834-B18	48" x 30.75" x 52"	120/60/1	771	15,424
ITD6034-B18	60" x 30.75" x 52"	120/60/1	773	16,108

COUNTER CASE — REFRIGERATED DROP IN ❄️

ITR3626	36" x 30" x 26"	120/60/1	558	19,901
ITR4826	48" x 30" x 26"	120/60/1	720	21,080
ITR6026	60" x 30" x 26"	120/60/1	800	22,286
ITR3634	36" x 30" x 34"	120/60/1	696	20,842
ITR4834	48" x 30" x 34"	120/60/1	841	22,256
ITR6034	60" x 30" x 34"	120/60/1	850	23,669

COUNTER CASE — NON-REFRIGERATED N°

ITD3626	36" x 30" x 26"	120/60/1	359	11,371
ITD4826	48" x 30" x 26"	120/60/1	410	11,996
ITD6026	60" x 30" x 26"	120/60/1	550	12,532
ITD3634	36" x 30" x 34"	120/60/1	407	12,074
ITD4834	48" x 30" x 34"	120/60/1	450	12,837
ITD6034	60" x 30" x 34"	120/60/1	625	13,526

ACCESSORIES For Italian Glass Cases

LED Lighting (Top and Below Shelf Lighting – 3500K)	N/C
Stainless Steel Shelving (Per Tier)	377
Casters (4" or Recessed) (Not Available on Counter Cases) (Includes Cord and Plug)	917
Cord and Plug (Standard on ITD Models)	263
6" Legs (Not Available on Counter Cases)	654
6" Legs with Skirt (Grey to Match Metal Frame) (Not Available on Counter Cases)	1,227
Reflective Ends (Pair)	446
Reflective Rear Doors (Pair)	784
Front Air Intake and Discharge (Floor Display Models)	263
Rear Wrap Board (Not Available on Counter Cases)	590
Remote Refrigeration without Compressor (EEV Included)	Deduct 425
Remote Refrigeration with Indoor Condensing Unit	Contact Factory
Remote Refrigeration with Outdoor Condensing Unit	3,585
Joining kit for Continuous Line-ups (N/A with Casters)	N/C
Laminated Base (B18 Models Only)	
(Standard Colors: Walnut, Natural Oak, Cherry, Beige, White, Black)	N/C
Special Base Laminate (B18 Models Only)	
(Formica® and Wilsonart® Standard Offerings)(N/A on Counter Cases)	397
Stainless Steel Exterior (B18 Models Only)	1,008
Alternate Power Supply: 220-240V 50HZ 1PH	1,083



Model ITR4834-B18



Model ITD4826
Counter not provided



Model ITD4834-B18



Model ITD4826
Counter not provided

Italian Glass Series

ITALIAN GLASS REFRIGERATED SELF SERVE – SERVE CASES

MODEL	DESCRIPTION (L X D X H)	ELECTRICAL	SHIP WEIGHT	LIST PRICE
-------	-------------------------	------------	-------------	------------

REFRIGERATED ❄️

ITRSS3626-B18	36" x 33" x 44"	120/60/1	625	\$ 21,306
ITRSS4826-B18	48" x 33" x 44"	120/60/1	680	23,114
ITRSS6026-B18	60" x 33" x 44"	208-240/60/1	820	26,075
ITRSS3634-B18	36" x 33" x 52"	120/60/1	650	23,208
ITRSS4834-B18	48" x 33" x 52"	120/60/1	800	24,785
ITRSS6034-B18	60" x 33" x 52"	208-240/60/1	930	27,970

NON-REFRIGERATED (SLIDING DOORS ON FRONT) N° — NEW —

ITDSS3626-B18	36"x30.75"x44"	120/60/1	550	14,893
ITDSS4826-B18	48"x30.75"x44"	120/60/1	640	15,591
ITDSS6026-B18	60"x30.75"x44"	120/60/1	700	16,124
ITDSS3634-B18	36"x30.75"x52"	120/60/1	575	15,591
ITDSS4834-B18	48"x30.75"x52"	120/60/1	690	16,434
ITDSS6034-B18	60"x30.75"x52"	120/60/1	800	17,117

DROP-IN COUNTER CASE — REFRIGERATED ❄️

ITRSS3626	36" x 33" x 26"	120/60/1	537	18,857
ITRSS4826	48" x 33" x 26"	120/60/1	720	20,419
ITRSS6026	60" x 33" x 26"	208-240/60/1	800	23,137
ITRSS3634	36" x 33" x 34"	120/60/1	586	20,758
ITRSS4834	48" x 33" x 34"	120/60/1	770	22,091
ITRSS6034	60" x 33" x 34"	208-240/60/1	850	25,030

COUNTER CASE — NON-REFRIGERATED (SLIDING DOORS ON FRONT) N° — NEW —

ITDSS3626	36" x 30" x 26"	120/60/1	350	12,441
ITDSS4826	48" x 30" x 26"	120/60/1	410	13,066
ITDSS6026	60" x 30" x 26"	120/60/1	550	13,602
ITDSS3634	36" x 30" x 34"	120/60/1	500	13,144
ITDSS4834	48" x 30" x 34"	120/60/1	450	13,907
ITDSS6034	60" x 30" x 34"	120/60/1	625	14,597

ACCESSORIES For Italian Glass Cases

LED Lighting (Top and Below Shelf Lighting – 3500K)	N/C
Stainless Steel Shelving (Per Tier)	377
Casters (4" or Recessed) (Not Available on Counter Cases) (Includes Cord and Plug)	917
Cord and Plug (Standard on ITDSS Models)	263
6" Legs (Not Available on Counter Cases)	654
6" Legs with Skirt (Not Available on Counter Cases)	1,227
Reflective Ends (Pair)	446
Reflective Rear Doors (Pair)	784
Front Air Intake and Discharge (Floor Display Models)	263
Rear Wrap Board (Not Available on Counter Cases)	590
Remote Refrigeration without Compressor	Deduct 425
Remote Refrigeration with Outdoor Condensing Unit	3,585
Remote Refrigeration with Indoor Condensing Unit	Contact Factory
Joining Kit for Continuous Line-ups (N/A with Casters)	N/C
Laminated Base (B18 Models Only) (Standard Colors: Walnut, Natural Oak, Cherry, Beige, White, Black)	N/C
Special Base Laminate (Formica® and Wilsonart® Standard Offerings) (B18 Models Only)	397
Stainless Steel Exterior (B18 Models Only)	1,008
Alternate Power Supply: 220-240V 50HZ 1PH	1,083
Security Cover (Includes rear door lock) (ITRSS Only)	1,003



Model ITRSS4834-B18



Model ITRSS4834
Counter not provided



The Signature of Quality

2021 Price List

Signature Series Bakery and Deli Cases

MARKET SERIES When ordering, specify case line-up and pedestal or panel design.

Bakery Cases

MODEL	DESCRIPTION (L X D X H)	ELECTRICAL	SHIP WEIGHT	LIST PRICE
REFRIGERATED (Refrigerated Display Deck, Non-Refrigerated Shelves) ❄️				
SQ3CB	36" x 44.12" x 48"	120/60/1	790	\$ 25,314
SQ4CB	48" x 44.12" x 48"	120/60/1	845	27,895
SQ5CB	60" x 44.12" x 48"	120/60/1	795	29,869
SQ6CB	72" x 44.12" x 48"	120/60/1	1,135	31,847
SQ8CB	96" x 44.12" x 48"	120/60/1	1,235	37,079

REFRIGERATED SELF-SERVE - STANDARD W/COND. PUMP ❄️

SQ3CBSS	36" x 44.12" x 32.25"	120/60/1	675	23,801
SQ4CBSS	48" x 44.12" x 32.25"	120/60/1	745	25,450
SQ5CBSS	60" x 44.12" x 32.25"	120/60/1	895	27,255
SQ6CBSS	72" x 44.12" x 32.25"	120/60/1	1,035	31,699
SQ8CBSS	96" x 44.12" x 32.25"	120/60/1	1,135	33,080

NON-REFRIGERATED N°

SQ3B	36" x 44.12" x 48"	120/60/1	590	20,287
SQ4B	48" x 44.12" x 48"	120/60/1	745	21,723
SQ5B	60" x 44.12" x 48"	120/60/1	862	23,649
SQ6B	72" x 44.12" x 48"	120/60/1	957	25,571
SQ8B	96" x 44.12" x 48"	120/60/1	1,035	29,044

Deli Cases

MODEL	DESCRIPTION (L X D X H)	ELECTRICAL	SHIP WEIGHT	LIST PRICE
REFRIGERATED SERVICE - STANDARD W/COND. PUMP ❄️				
SQ3CD	36" x 44.12" x 48"	120/60/1	690	24,212
SQ4CD	48" x 44.12" x 48"	120/60/1	745	26,454
SQ5CD	60" x 44.12" x 48"	120/60/1	895	27,784
SQ6CD	72" x 44.12" x 48"	120/60/1	1,035	29,122
SQ8CD	96" x 44.12" x 48"	120/60/1	1,135	33,916

REFRIGERATED SELF-SERVE - STANDARD W/COND. PUMP ❄️

SQ3CDSS	36" x 44.12" x 32.25"	120/60/1	675	22,764
SQ4CDSS	48" x 44.12" x 32.25"	120/60/1	745	24,135
SQ5CDSS	60" x 44.12" x 32.25"	120/60/1	975	25,353
SQ6CDSS	72" x 44.12" x 32.25"	120/60/1	1,035	26,572
SQ8CDSS	96" x 44.12" x 32.25"	120/60/1	1,135	30,255

REFRIGERATED CORNERS ❄️

SQROC90	90° Outside Service	120/60/1	781	28,596
SQROC90SS	90° Outside Self-Serve	120/60/1	716	25,829
SQRIC90	90° Inside Service 120/60/1		781	32,402
SQRIC90SS	90° Inside Self-Serve	120/60/1	716	29,907
SQROC45R	45° Outside Service (Remote Only)	120/60/1	710	23,460
SQROC45SSR	45° Outside Self-Serve (Remote Only)	120/60/1	662	18,558
SQRIC45	45° Inside Service 120/60/1		710	30,439
SQRIC45SS	45° Inside Self-Serve	120/60/1	662	27,173

HOT 🔥

SQ3HD	36" x 44.12" x 48"	208-240/60/1 (4 wire)	375	24,826
SQ4HD	48" x 44.12" x 48"	208-240/60/1 (4 wire)	707	27,434
SQ6HD	72" x 44.12" x 48"	208-240/60/1 (4 wire)	710	32,645
SQ8HD	96" x 44.12" x 48"	208-240/60/1 (4 wire)	1108	39,566

Continued on next page >



Model SQ6CB



Model SQ6CBSS



Model SQ6B



Model SQ6CD

MARKET SERIES *(Continued)*

ACCESSORIES For SQ Market Cases

LED lighting (Top Light - 3500K) (CD Models) (N/A on Self Serve corner cases)	\$	N/C
LED Lighting (Top and Below Shelf Lighting - 3500K) (CB Models)		N/C
Accent Base LED - 3500K Light		653
Bumper Rail (Per Linear Foot) (Colors: White, Black, Grey, Green)		66
Decorative End Panel (pair) (Colors: White, Black, Grey, Green)		1,812
Fish Case Package (Includes Ice Pan) (Floor Drain Required)		1,465
Food Container Holder		866
Laminated Base (In Lieu of Stainless Steel) (Panel Base Only) (Formica® and Wilsonart® Standard Offerings)		397
Reflective End Glass (pair)		425
Scale Stand (N/A on SS Models)		436
Special Case height (50" or 52") (34" or 36" on SS Models)		1,176
Deli Step Pan Holder or Riser (Per Section)		507
Deli Mezzanine Shelf for Non Refrigerated Product Only (LED 3500K Lighted Shelf)		
36", 48", 50", 72"		1,403
96"		1,668
Top Service Shelf (Stainless Steel or Glass)		1,797

ACCESSORIES For Refrigerated Only

Remote Refrigeration with Outdoor Condensing Unit		3,585
Remote Refrigeration with Indoor Condensing Unit	Contact Factory	
Remote Refrigeration without Compressor Supplied (EEV Included)	Deduct 425	
Casters for Panel Base Models Only (Not Available on Hot Case)(Includes Cord)		917
Legs (6")		654
Seismic Legs		748
Cord and Plug		263
Joining Kit for Continuous Case Line-ups (N/A with Casters)		N/C
Condensate Evaporator Assembly - On Self-Serve Models Only (Field Install Kit, Dedicated 120V 15A Circuit Required)		483
Condensate Pump (Standard on SS Models)		N/C
Alternate Power Supply:		
220-240V 50HZ 1PH		1,083

ACCESSORIES For Hot Only

Cord and Plug (Not Available)		
Flat Stainless Deck on Hot Delis		466
Well Covers (Hot Models Only) (Single Cover)		155
Well Covers (Hot Models Only) (Set of 3)		466



Model SQ8CDSS
(Shown with panel base)



Model SQ4HD



*Shown with optional closed
pedestal base



Model SQ6CD
(Shown Open Pedestal Base)



The Signature of Quality

2021 Price List

SERIES '90

Bakery Cases

MODEL	DESCRIPTION (L X D X H)	ELECTRICAL	SHIP WEIGHT	LIST PRICE
-------	-------------------------	------------	-------------	------------

REFRIGERATED ❄️

SNR48SC	48" x 37.75" x 48"	120/60/1	750	\$ 23,221
SNR59SC	59" x 37.75" x 48"	120/60/1	1,007	24,749
SNR77SC	77" x 37.75" x 48"	120/60/1	1,150	26,022

DUAL (Left Half Refrigerated, Right Half Non-Refrigerated, from Customer Side) ❄️ N°

SN483SC	48" x 37.75" x 48"	120/60/1	750	25,343
SN593SC	59" x 37.75" x 48"	120/60/1	865	27,007
SN773SC	77" x 37.75" x 48"	120/60/1	1,075	28,359

NON-REFRIGERATED N°

SN48	48" x 37.75" x 48"	120/60/1	640	13,656
SN59	59" x 37.75" x 48"	120/60/1	802	14,058
SN77	77" x 37.75" x 48"	120/60/1	865	15,322
SN96	96" x 37.75" x 48"	120/60/1	935	18,879

NON-REFRIGERATED SELF-SERVE BAKERY N°

SN48SS	48" x 37.75" x 48"	120/60/1	600	17,315
SN59SS	59" x 37.75" x 48"	120/60/1	710	20,353
SN77SS	77" x 37.75" x 48"	120/60/1	708	22,021

Deli Cases

MODEL	DESCRIPTION (L X D X H)	ELECTRICAL	SHIP WEIGHT	LIST PRICE
-------	-------------------------	------------	-------------	------------

REFRIGERATED SERVICE ❄️

SN4CD	48" x 37.75" x 48"	120/60/1	770	23,914
SN6CD	72" x 37.75" x 48"	120/60/1	1,000	25,491
SN8CD	96" x 37.75" x 48"	120/60/1	1,357	27,466

REFRIGERATED SELF-SERVE - STANDARD W/COND. PUMP ❄️

SN4CDSS	48" x 37.75" x 34"	120/60/1	610	19,830
SN6CDSS	72" x 37.75" x 34"	120/60/1	800	21,152
SN8CDSS	96" x 37.75" x 34"	120/60/1	1,065	22,227

HOT 🔥

SN4HD	48.25" x 37.75" x 48"	208-240/60/1 (4 wire)	650	21,814
SN6HD	77.25" x 37.75" x 48"	208-240/60/1 (4 wire)	860	25,839

ACCESSORIES For Series '90 Cases

Base Trim Specify White, Black, or Stainless Steel	N/C
Black Interior	820
Casters 2 1/2" or 4" (Includes Cord and Plug) (not available on Hot or Self-Serve)	917
Legs (6")	654
Cord and Plug (Not Available Hot and Self-Serve Refrigerated)	263
Fish Case Package (For Cold Deli, Includes Ice Pan) (floor drain required)	1,465
Front Glass and Rear Door Locks	496
Front Package Shelf	810
with Lights Below Shelf	1,140
Glass Shelves in Lieu of Wire (Per Tier)	321
Laminated Base (Standard Colors: Walnut, Natural Oak, Cherry, Beige, White, Black)	N/C
Special Color Laminated Base (Formica® and Wilsonart® Standard Offerings)	397
Plain Base without Laminate	N/C
Stainless Steel Base in Lieu of Laminate	1,008



Model SN77/SNR48



Model SN77
Lift-up front glass



Model SN4HD/ Model SN6CD



Model SN6CDSS

Continued on next page >


The Signature of Quality
ACCESSORIES For Series '90 Cases (Continued)

LED LIGHTING (Not Available on Hot Cases)

LED Top Light and Below Shelves

Refrigerated Bakery		
SNR48SC		\$ 1,544
SNR59SC		1,767
SNR77SC		2,211
Dual Bakery		
SN483SC		1,544
SN593SC		1,767
SN773SC		2,211
Non-Refrigerated Bakery		
SN48		1,544
SN59		1,767
SN77		2,211
Non-Refrigerated Self-Serve Bakery		
SN48SS		1,544
SN59SS		1,767
SN77SS		2,211
LED Top Light and Below Mezzanine Shelf		
Refrigerated Service Deli		
SN4CD and SN6CD		888
SN8CD		1,332
Refrigerated Self-Serve Deli		
SN4CD-SS and SN-6CD-SS		444
SN8CDSS		667
Mezzanine Shelf for Refrigerated Deli, Additional (Lighted) (Not available S/S)		
48"		817
72"		956
96"		983
Mezzanine Shelf for Ref Deli, Additional (Lighted Std & LED)		667
Rear Wrapping Board for Bakery		
48"		532
59"		590
77"		650
Reflective Ends (Pair)		446
White or Mirrored Interior Ends with Laminated Exterior (Not Available on Self-Serve Units)		601
Reflective Rear Doors (Pair)		784
Stainless Steel Interior (in lieu of White)		1,006
Stainless Steel Display Deck		479
Stainless Steel Display Deck (SN8CD only)		789
Scale Stand		436
Step Pan Holder or Riser (Per Section, Specify 2 Step or 3 Step)		507
Top Service Shelf (Stainless Steel or Glass)		1,797
Condensate Evaporator Assembly (Self-Serve Case Only)		
(Field Install Kit, Dedicated 120V 15A Circuit Required)		483
Condensate Pump (In lieu of Pan)		N/C
Alternate Power Supply:		
220-240V 50HZ 1PH		1,083



The Signature of Quality

2021 Price List

CURVED GLASS SERIES When ordering, specify case line-up and finish.

Bakery Cases

MODEL	DESCRIPTION (L X D X H)	ELECTRICAL	SHIP WEIGHT	LIST PRICE
REFRIGERATED ❄️				
CGR3142	31" x 35.31" x 42"	120/60/1	460	\$ 19,866
CGR3148	31" x 35.31" x 48"	120/60/1	500	20,044
CGR3642	36" x 35.31" x 42"	120/60/1	470	22,405
CGR3648	36" x 35.31" x 48"	120/60/1	510	22,883
CGR5042	50" x 35.31" x 42"	120/60/1	615	23,840
CGR5048	50" x 35.31" x 48"	120/60/1	721	24,307
CGR5942	59" x 35.31" x 42"	120/60/1	735	25,546
CGR5948	59" x 35.31" x 48"	120/60/1	821	26,007
CGR7742	77" x 35.31" x 42"	120/60/1	890	26,760
CGR7748	77" x 35.31" x 48"	120/60/1	930	26,931

NON-REFRIGERATED

CGD3148	31" x 35.31" x 48"	120/60/1	270	13,061
CGD3642	36" x 35.31" x 42"	120/60/1	385	13,178
CGD3648	36" x 35.31" x 48"	120/60/1	430	13,644
CGD5042	50" x 35.31" x 42"	120/60/1	671	13,482
CGD5048	50" x 35.31" x 48"	120/60/1	625	13,940
CGD5942	59" x 35.31" x 42"	120/60/1	505	13,925
CGD5948	59" x 35.31" x 48"	120/60/1	535	14,428
CGD7742	77" x 35.31" x 42"	120/60/1	685	15,342
CGD7748	77" x 35.31" x 48"	120/60/1	715	15,806

DUAL VERTICAL (Left Half Refrigerated, Right Half Non-Refrigerated, from Customer Side) ❄️ N°

CGR5042DZ	50" x 35.31" x 42"	120/60/1	615	26,093
CGR5048DZ	50" x 35.31" x 48"	120/60/1	690	26,506
CGR5942DZ	59" x 35.31" x 42"	120/60/1	735	28,053
CGR5948DZ	59" x 35.31" x 48"	120/60/1	783	28,519
CGR7742DZ	77" x 35.31" x 42"	120/60/1	890	29,406
CGR7748DZ	77" x 35.31" x 48"	120/60/1	960	29,872

DUAL HORIZONTAL (Bottom Refrigerated, Top Non-Refrigerated) ❄️ N°

CGR3660DZH	36" x 35.31" x 60"	120/60/1	580	31,120
CGR5060DZH	50" x 35.31" x 60"	120/60/1	800	33,419
CGR5960DZH	59" x 35.31" x 60"	120/60/1	825	37,696
CGR7760DZH	77" x 35.31" x 60"	120/60/1	1,232	39,536

Deli Cases

MODEL	DESCRIPTION (L X D X H)	ELECTRICAL	SHIP WEIGHT	LIST PRICE
REFRIGERATED DELI ❄️				
CGR3648CD	36" x 35.31" x 48"	120/60/1	470	23,811
CGR5048CD	50" x 35.31" x 48"	120/60/1	620	24,878
CGR5948CD	59" x 35.31" x 48"	120/60/1	650	26,592
CGR7748CD	77" x 35.31" x 48"	120/60/1	995	27,803

HOT DELI 🔥

CG5048HD	50" x 35.31" x 48"	208-240/60/1 (4 wire)	585	22,656
CG5948HD	59" x 35.31" x 48"	208-240/60/1 (4 wire)	660	24,198
CG7748HD	77" x 35.31" x 48"	208-240/60/1 (4 wire)	800	29,103

Continued on next page ➤



Model CGR5048



Model CGD7748



Model CGR5960DZH



Model CGR7748CD

ACCESSORIES For Curved Glass Bakery and Deli Cases (Continued)

LED Lighting (Top and Below Shelf Lighting – 3000K)(Not Available in HD)	\$	N/C
Black or Chrome Wire Shelves in Lieu of White		657
Glass Shelves in Lieu of Wire (Per Tier)		496
Black Interior (N/A on Cold Deli & Hot Deli Models)		820
Legs (6")		654
Seismic Legs		748
Casters (2 1/2" or 4") (N/A Hot Deli) (Includes Cord and Plug)		917
Cord and Plug (Not Available on Hot Deli)		263
Front Package Shelf without Light		444
Front Package Shelf with LED Light		755
HDP – Hot Display Package with Humidity for Non-Refrigerated Units		
36", 50", 59", 77" Units		7,214
Joining Kit for Continuous Case Line-ups (N/A with Casters)		N/C
Laminated Base (Standard Colors: Walnut, Natural Oak, Cherry, Beige, White, Black)		N/C
Special Color Laminated Base (Formica® and Wilsonart® Standard Offerings)		397
Plain Base without Laminate		N/C
Stainless Steel Base in Lieu of Laminate		1,008
Lighted Mezzanine Shelf for Refrigerated Deli, Additional		956
Rear Wrapping Board for Bakery		590
Reflective Rear Doors (Pair)		784
Reflective Ends (Pair)		446
White or Mirrored Interior Ends with Laminated Exterior		602
Remote Refrigeration with Outdoor Condensing Unit		
31", 36", 50", all "DZ" models		3,455
59", 77"		4,145
Remote Refrigeration with Indoor Condensing Unit	Contact Factory	
Remote Refrigeration without Compressor Supplied (EEV Included)	Deduct 425	
Locks (Front and Rear Door)		496
Scale Stand		436
Deli Step Riser or Pan Holder (Per Section)		507
Top Cutting Board, White		590
Stainless Steel Display Deck		479
Fan Kit (CGD Models Only)		448
Rear Base Panel Cover (CGD Models Only)		250
Alternate Power Supply:		
220-240V 50HZ 1PH		1,083


Model CG5048HD



The Signature of Quality®

2021 Price List

HIGH VOLUME SERIES

When ordering, specify case line-up and finish.

Bakery Cases

MODEL	DESCRIPTION (L X D X H)	ELECTRICAL	SHIP WEIGHT	LIST PRICE
-------	-------------------------	------------	-------------	------------

REFRIGERATED ❄️

SGR3142	31" x 35.31" x 42"	120/60/1	460	\$ 13,654
SGR3148	31" x 35.31" x 48"	120/60/1	500	13,899
SGR3642	36" x 35.31" x 42"	120/60/1	470	16,721
SGR3648	36" x 35.31" x 48"	120/60/1	510	17,167
SGR5042	50" x 35.31" x 42"	120/60/1	615	18,185
SGR5048	50" x 35.31" x 48"	120/60/1	603	18,714
SGR5942	59" x 35.31" x 42"	120/60/1	806	21,289
SGR5948	59" x 35.31" x 48"	120/60/1	765	21,783
SGR7742	77" x 35.31" x 42"	120/60/1	890	21,601
SGR7748	77" x 35.31" x 48"	120/60/1	930	22,397

NON-REFRIGERATED N°

SGD3148	31" x 35.31" x 48"	120/60/1	380	6,369
SGD3642	36" x 35.31" x 42"	120/60/1	400	7,357
SGD3648	36" x 35.31" x 48"	120/60/1	516	7,682
SGD5042	50" x 35.31" x 42"	120/60/1	550	8,684
SGD5048	50" x 35.31" x 48"	120/60/1	575	9,037
SGD5942	59" x 35.31" x 42"	120/60/1	540	8,924
SGD5948	59" x 35.31" x 48"	120/60/1	555	9,210
SGD7742	77" x 35.31" x 42"	120/60/1	685	9,780
SGD7748	77" x 35.31" x 48"	120/60/1	715	10,217

DUAL (Left Half Refrigerated, Right Half Non-Refrigerated, from Customer Side) ❄️ N°

SGR5042DZ	50" x 35.31" x 42"	120/60/1	688	20,387
SGR5048DZ	50" x 35.31" x 48"	120/60/1	730	20,896
SGR5942DZ	59" x 35.31" x 42"	120/60/1	735	23,799
SGR5948DZ	59" x 35.31" x 48"	120/60/1	765	24,293
SGR7742DZ	77" x 35.31" x 42"	120/60/1	890	24,244
SGR7748DZ	77" x 35.31" x 48"	120/60/1	930	25,042

Deli Cases

MODEL	DESCRIPTION (L X D X H)	ELECTRICAL	SHIP WEIGHT	LIST PRICE
-------	-------------------------	------------	-------------	------------

REFRIGERATED DELI ❄️

SGR3648CD	36" x 35.31" x 48"	120/60/1	590	17,858
SGR5048CD	50" x 35.31" x 48"	120/60/1	620	19,120
SGR5948CD	59" x 35.31" x 48"	120/60/1	650	22,180
SGR7748CD	77" x 35.31" x 48"	120/60/1	860	22,736

HOT DELI 🔥

SG5048HD	50" x 35.31" x 48"	208-240/60/1 (4 wire)	535	18,398
SG5948HD	59" x 35.31" x 48"	208-240/60/1 (4 wire)	660	19,639
SG7748HD	77" x 35.31" x 48"	208-240/60/1 (4 wire)	800	23,609



Model SGD7748 / Model SGR5948



Model SGR5048DZ



Model SG5048HD / Model SGR7748CD

Continued on next page >


The Signature of Quality
ACCESSORIES *For High Volume Cases*

LED Lighting (Top and Below Shelf Lighting – 3000K) (Not Available HD)	\$	N/C
Black or Chrome Wire Shelves in Lieu of White		657
Glass Shelves in Lieu of Wire (Per Tier)		496
Black Interior (N/A on Cold Deli & Hot Deli Models)		820
Legs (6")		654
Seismic Legs		748
Casters (2 1/2" or 4") (N/A Hot Deli) (Includes Cord and Plug)		917
Cord and Plug (Not Available on Hot Deli)		263
HDP – Hot Display Package with Humidity for Non-Refrigerated Units		
36", 50", 59", 77" Units		7,214
Joining Kit for Continuous Case Line-ups (N/A with Casters)		N/C
Laminated Base (Standard Colors: Walnut, Natural Oak, Cherry, Beige, White, Black)		N/C
Special Color Laminated Base (Formica® and Wilsonart® Standard Offerings)		397
Plain Base without Laminate		N/C
Stainless Steel Base in Lieu of Laminate		1,008
Lighted Mezzanine Shelf for Refrigerated Deli, Additional		956
Front Package Shelf without Light		444
Front Package Shelf with LED Light		1,199
Rear Wrapping Board for Bakery		590
Reflective Rear Doors (Pair)		784
Self Closing Front Doors (not available for 31" or 36" cases)		1,802
Reflective Ends (Pair)		446
White or Mirrored Interior Ends with Laminated Exterior		602
Remote Refrigeration with Outdoor Condensing Unit		
31", 36", 50", all "DZ" models		3,455
59", 77"		4,145
Remote Refrigeration with Indoor Condensing Unit	Contact Factory	
Remote Refrigeration without Compressor Supplied (EEV Included)	Deduct 425	
Scale Stand		436
Deli Step Riser or Pan Holder (Per Section)		507
Top Cutting Board, White		590
Locks (Front and Rear Door)		496
Stainless Steel Display Deck		479
Rear Base Panel Cover (CGD Models Only)		250
Alternate Power Supply:		
208-240V 60HZ 1PH		1083
220-240V 50HZ 1PH		1083



The Signature of Quality

2021 Price List

Specialty Display Cases

SELF-SERVE REFRIGERATED MERCHANDISERS When ordering, specify finish.

MODEL	DESCRIPTION (L X D X H)	ELECTRICAL	SHIP WEIGHT	LIST PRICE
-------	-------------------------	------------	-------------	------------

LOW PROFILE — REFRIGERATED ❄️

LPRSS3	36" x 34" x 46"	120/60/1	477	\$ 12,475
LPRSS4	48" x 34" x 46"	120/60/1	647	12,992
LPRSS5	60" x 34" x 46"	208-240/60/1	650	16,013
LPRSS6	72" x 34" x 46"	208-240/60/1	700	16,785

ACCESSORIES For Low Profile Self-Serve Merchandisers

LED Lighting (Top and Below Shelf Lighting – 3500K)	N/C
Casters (Recessed or 4") (Includes Cord and Plug)	654
Legs (6")	654
Seismic Legs	748
Laminated Finish (Standard Colors: Walnut, Natural Oak, Cherry, Beige, White, Black)	N/C
Special Color Laminate (Formica® and Wilsonart® Standard Offerings)	397
Stainless Steel Base in Lieu of Laminate	1,008
Remote Refrigeration with Outdoor Condensing Unit	
LPR3, LPR4, LPR5	3,585
LPR6	4,145
Remote Refrigeration with Indoor Condensing Unit	Contact Factory
Remote Refrigeration without Compressor Supplied (EEV Included)	Deduct 425
Sound Deadening Kit	433
Reflective End Glass (Pair)	446
Pair of Flush End Panels for Counter Installations (Includes Mirrored Interior)	440
Rear Access Doors	1,524
Two-Tier Stainless Steel Display Step in Lieu of Shelving	173
Shelving, Two Tier (Glass or Stainless)	313
Joining Kit for Continuous Line-ups (N/A with Casters)	N/C
Security Night Cover, Black Polycarbonate	1,003
Front Condensing Unit Air Discharge	795
Stainless Steel Interior, Includes Shelves	1,524
Stainless Shelves in lieu of black (Per Tier)	157
Glass Shelves in lieu of black (Per Tier)	157
Rear Air Intake	795
Condensate Evaporator Assembly – Required if No Drain Available (LPRSS5 and LPRSS6 only) (Field Install Kit, Dedicated 120V 15A Circuit Required)	483
Condensate Pump (Standard on LPRSS5 and LPRSS6 and Remote Cases)	N/C
Alternate Power Supply:	
220-240V 50HZ 1PH	939



Model LPRSS4

HIGH PROFILE SELF-SERVE REFRIGERATED MERCHANDISERS

When ordering, specify finish.

MODEL	DESCRIPTION (L X D X H)	ELECTRICAL	SHIP WEIGHT	LIST PRICE
-------	-------------------------	------------	-------------	------------

HIGH PROFILE — REFRIGERATED

RSSM360SC	36" x 35.25" x 60"	208-240/60/1	721	\$ 17,758
RSSM460SC	47.25" x 35.25" x 60"	208-240/60/1	883	18,229
RSSM560SC	59.25" x 35.25" x 60"	208-240/60/1	960	19,597
RSSM660SC	71.25" x 35.25" x 60"	208-240/60/1	1,020	20,999

RSSM378SC	36" x 35.25" x 78"	208-240/60/1	834	18,343
RSSM478SC	47.25" x 35.25" x 78"	208-240/60/1	983	18,776
RSSM578SC	59.25" x 35.25" x 78"	208-240/60/1	1,073	20,432
RSSM678SC	71.25" x 35.25" x 78"	208-240/60/1	1,221	21,621

HIGH PROFILE — NON-REFRIGERATED

MODEL	DESCRIPTION (L X D X H)	ELECTRICAL	SHIP WEIGHT	LIST PRICE
NSSM360	36" x 35.25" x 60"	120/60/1	625	10,974
NSSM460	47.25" x 35.25" x 60"	120/60/1	632	12,614
NSSM660	71.25" x 35.25" x 60"	120/60/1	918	13,807
NSSM378	36" x 35.25" x 78"	120/60/1	750	12,072
NSSM478	47.25" x 35.25" x 78"	120/60/1	841	12,614
NSSM578	59.25" x 35.25" x 78"	120/60/1	920	14,093
NSSM678	71.25" x 35.25" x 78"	120/60/1	1,118	13,644
NSSM878	91.25" x 35.25" x 78"	120/60/1	1,483	15,264

ACCESSORIES For High Profile Self-Serve Merchandisers

Drop-In Option (Available only on 60" tall, 30" deep models)	1866
Front Wire Basket for non-refrigerated items	415
Easy Clean Condenser Filter	N/C
LED Lighting (Top Light – 3500K)	N/C
All White Case (Interior, Exterior, Trim and Base)	800
White Interior (Includes Shelving)	N/C
Stainless Interior (Includes Shelving)	
360, 460	1,378
560	2,443
660	3,233
378, 478	2,132
578	3,951
678	5,531
Black Trim	707
Casters (2 1/2" or 4") (Includes Cord and Plug)	917
Legs (6")	654
Seismic Legs	748
Casters (2 1/2" or 4") with Removable Skirt (Includes Cord and Plug)	1,227
Cord and Plug	263
Glass Shelves Per Tier - In lieu of black	205
Stainless Steel Shelves Per Tier - in lieu of black	
3', 4', 5'	377
6', 8'	754
Laminated Finish (Standard Colors: Walnut, Natural Oak, Cherry, Beige, White, Black)	N/C
Special Color Laminate (Formica® and Wilsonart® Standard Offerings)	565
Stainless Steel Finish in Lieu of Laminate	
36", 48"	1,631
60", 72"	2,290
96"	3,066



Model RSSM678SC / RSSM360SC



Model RSSM678SC
with security roll-up cover requires
squared ends. Shown with
optional rear sliding doors.



Model RSSM Drop In Option

Continued on next page >



The Signature of Quality

2021 Price List

ACCESSORIES For High Profile Self-Serve Merchandisers (Continued)

LED Lights Below Shelves – 3500K	
360, 460, 560, 660	\$ 480
378, 478	560
578, 678, 878	720
Reflective End Glass (Pair)	448
Rear Condensing Unit Air Discharge Standard (Front discharge automatic when pushed against a wall)	N/C
Knee Wall installation requires alternate condensing unit configuration (Must order at time of purchase)	N/C
Solid Hinged Rear Access Doors (includes Rear Mount Controls)	
36" and 48"	1,888
60"	2,100
72"	2,472
96"	3,776
Sliding Rear Access Doors (includes Rear Mount Controls)	
48"	1,888
60"	2,100
72"	2,472
96"	3,776
Joining Kit for Continuous Line Up (N/A with Casters)	N/C
Security Roll Cover (Black or White) Note: Unit Comes with Square Front and Ends (Not Available if Cases are Joined)	
36", 48"	3,212
60", 72"	3,920
96"	5,226
Security Night Cover – Removable Metal Clad	1,149
Security Night Cover – Removable Black Polycarbonate	1,149
Slim Profile 30" Deep	314
Additional Shelves (No Light)	401
Additional Shelves (LED Lighted -3500K)	525
Stainless Steel Shelves (Per Tier, No Light)	
36", 48", 60"	377
72", 96"	754
Sound Deadening Kit	433
Deli Meat Pegs (Per Tier) (In Lieu of Shelves)	541
Remote Refrigeration with Outdoor Condensing Unit	
36", 48"	4,145
60", 72"	4,395
96"	4,850
Remote Refrigeration with Indoor Condensing Unit	Contact Factory
Remote Refrigeration without Compressor Supplied (EEV Included)	Deduct 690
For Continuous Line-ups (Plexiglass Divider is Provided)	N/C
Condensate Evaporator Assembly – Required if No Drain Available (Field Install Kit, Dedicated 120V 15A Circuit Required) for Remote Models Only	483
Condensate Pump – Standard on All Remote Models	N/C
Bumper (Black)	425
Alternate Power Supply:	
220-240V 50HZ 1PH	1,132
Slanted Milk Crate Insert	325

REFRIGERATED SELF-SERVE HIGH PROFILE SPECIALTY MERCHANDISER

NEW

MODEL	DESCRIPTION (L X D X H)	ELECTRICAL	SHIP WEIGHT	LIST PRICE
-------	-------------------------	------------	-------------	------------

HIGH PROFILE — REFRIGERATED ❄️

RSSM3078				Contact Factory
----------	--	--	--	-----------------

ACCESSORIES:

Special External Laminate Finish				Contact Factory
6" Legs				Contact Factory
White Interior (Including Shelving)				Contact Factory
Skirt w/Casters or Legs				Contact Factory
Stainless Steel Exterior Finish				Contact Factory
Condensate Evaporator w/Glass Ends				Contact Factory
Stainless Steel Interior Back				Contact Factory
Stainless-Steel Shelves				Contact Factory
Reflective End Glass				Contact Factory
Additional Lighted (LED Shelves)				Contact Factory
Removable Security Cover				Contact Factory
LED Lights Below Shelves				Contact Factory



RSSM3078

HIGH PROFILE SELF-SERVE HEATED MERCHANDISERS When ordering, specify finish.

NEW

MODEL	DESCRIPTION (L X D X H)	ELECTRICAL	SHIP WEIGHT	LIST PRICE
-------	-------------------------	------------	-------------	------------

HIGH PROFILE — HEATED 🔥

HSSM260	24.1" x 35.2" x 60.6"	208-240/60/1	560	\$ 22,600
HSSM360	36.1" x 35.2" x 60.7"	208-240/60/1	625	24,300
HSSM460	48.1" x 35.2" x 60.7"	208-240/60/1	720	26,900

ACCESSORIES *For Heated Self-Serve Merchandisers*

Joining kits for continuous line-up (Casters not available)				N/C
LED Top Light – 3500K				N/C
Casters (2 1/2" or 4")				654
4" Casters w/ Skirt Installed				1227
Legs (6")				654
Seismic Legs				748
Front Cart Bumper (Black)				425
Reflective End Glass (Pair)				448
Laminated Finish (Standard Colors: Walnut, Natural Oak, Cherry, Beige, White, Black)				N/C
Special Color Laminate (Formica® and Wilsonart® Standard Offering)				565
Stainless Steel Finish in Lieu of Laminate				
24"				1,300
36"				1,631
48"				1,631
LED Lights Below Shelves (3 Tiers) – 3500K				480
Reflective Rear Access Sliding Door (Hinged door on 24" Model)				
24"				1,240
36"				1,400
48"				1,500
Clear Rear Access Sliding Door (Hinged door on 24" Model)				
24"				1,000
36"				1,215
48"				1,310
Replacement Heated Shelf without LED Lights				
24" Wide Shelf Rated 208/240V				433
36" Wide Shelf Rated 208/240V				467
48" Wide Shelf Rated 208/240V				586
Replacement Heated Deck				
24" Wide Shelf Rated 208/240V				405
36" Wide Shelf Rated 208/240V				449
48" Wide Shelf Rated 208/240V				571



HSSM Heated Merchandiser



The Signature of Quality

2021 Price List

24" SELF-SERVE SLIM LINE REFRIGERATED MERCHANDISER



Model RSSL578SC

MODEL	DESCRIPTION (L X D X H)	ELECTRICAL	SHIP WEIGHT	LIST PRICE
HIGH PROFILE — REFRIGERATED ❄️				
RSSL378SC	36" x 24" x 78"	120/60/1	800	\$ 18,434
RSSL478SC	48" x 24" x 78"	208-240/60/1	892	18,867
RSSL578SC	60" x 24" x 78"	208-240/60/1	904	20,533
RSSL678SC	72" x 24" x 78"	208-240/60/1	1,180	21,726
ACCESSORIES <i>For Slim-line High Profile Self-Serve Merchandisers</i>				
LED Top Light – 3500K Standard				N/C
All White Case (Interior, Exterior, Trim and Base)				800
White Interior (Includes Shelving)				N/C
Stainless Interior (Includes Shelving)				
378, 478				2,132
578				3,951
678				5,531
Stainless Steel Interior Back				
36", 48"				624
60", 72"				935
Stainless Steel Shelves (Per Tier)				
36", 48", 60"				377
72"				754
Casters (2 1/2")				654
Legs (6")				654
Seismic Legs				748
Casters 2 1/2" with Skirt				1,227
Joining Kit for continuous lineups (N/A with Casters option)				N/C
Cord and Plug				Standard
Laminated Finish (Standard Colors: Walnut, Natural Oak, Cherry, Beige, White, Black)				N/C
Special Color Laminate (Formica® and Wilsonart® Standard Offering)				565
Stainless Steel Finish in Lieu of Laminate				
36", 48"				1,631
60", 72"				2,290
LED Lights Below Shelves – 3500K				
378, 478				560
578, 678				720
Security Night Cover – Removable Black Polycarbonate				1,149
Additional Black Shelf (Non Lighted)				401
Additional Black Shelf (LED Lighted-3500K)				525
Glass Shelves (Per Tier)				205
Sound Deadening Kit				433
Deli Meat Pegs (Per Tier) (In Lieu of Shelves)				541
Remote Refrigeration with Outdoor Condensing Unit				
36", 48"				4,145
60", 72"				4,395
Remote Refrigeration with Indoor Condensing Unit				Contact Factory
Remote Refrigeration without Compressor Supplied (EEV Included)				Deduct 690
Condensate Pump – (In Lieu of Pan)				N/C
Condensate Evaporator Assembly – Required if No Drain Available (Field Install Kit, Dedicated 120V 15A Circuit Required) (Remote Only)				483
Reflective End Glass (Pair)				448
Alternate Power Supply:				
220-240V 50HZ 1PH				1,132
208-240V 60HZ 1PH (RSSL378 ONLY)				1,058

HIGH PROFILE — DAIRY ❄️

MODEL	DESCRIPTION (L X D X H)	ELECTRICAL	SHIP WEIGHT	LIST PRICE
RSSD360SC	36" x 34.25" x 60"	208-240/60/1	700	17,578
RSSD460SC	47.25" x 34.25" x 60"	208-240/60/1	775	18,377
RSSD560SC	59.25" x 34.25" x 60"	208-240/60/1	950	20,064
RSSD660SC	71.25" x 34.25" x 60"	208-240/60/1	1,000	21,181
RSSD378SC	36" x 34.25" x 78"	208-240/60/1	834	17,913
RSSD478SC	47.25" x 34.25" x 78"	208-240/60/1	925	18,867
RSSD678SC	71.25" x 34.25" x 78"	208-240/60/1	1,195	21,726
RSSD878R	91.81" x 34.25" x 78"	208-240/60/1	1,622	30,824

ACCESSORIES For High Profile Self-Serve Merchandisers

LED Lighting (Top Light – 3500K) Standard with Top and Vertical Lights	N/C
Black Interior RSSD (Includes Shelving) (White Interior Standard)	N/C
Stainless Steel Finish in lieu of Laminate	
36", 48"	1,631
60", 72"	2,290
96"	3,066
Casters (2 1/2" or 4") (Includes Cord and Plug)	917
Casters (2 1/2" or 4") with Skirt (Includes Cord and Plug)	1,227
6" Legs	654
Seismic Legs	748
Cord and Plug	263
Glass Shelves Per Tier (Shelf Light Not Available)	205
Laminated Finish (Standard Colors: Walnut, Natural Oak, Cherry, Beige, White, Black)	N/C
Special Color Laminate (Formica® and Wilsonart® Standard Offerings)	565
Reflective End Glass (Pair)	448
Rear Condensing Unit Air Discharge Standard (Front discharge automatic when pushed against a wall)	N/C
Knee Wall installation requires alternate condensing unit configuration (Must order at time of purchase)	N/C
Hinged Rear Access Doors	
36" and 48"	1,888
60"	2,100
72"	2,472
96"	3,776
Sliding Rear Access Doors	
48"	1,888
60"	2,100
72"	2,472
96"	3,776
Joining Kit for Continuous Line Up (N/A with Casters)	N/C
Security Night Cover Removable – Black Polycarbonate	1,149
Slim Profile 30" Deep	314
Stainless Interior (Includes Shelving)	
360, 460	1,378
560	2,443
660	3,233
378, 478	2,132
578	3,951
678	5,531



Model RSSD678SC

Continued on next page >



The Signature of Quality

2021 Price List

All White Case (Interior, Exterior, Trim and Base)	800
Sound Deadening Kit	433
Deli Meat Pegs - in lieu of shelves (Per Tier)	541
Remote Refrigeration with Outdoor Condensing Unit	
36", 48"	4,145
60", 72"	4,395
96"	4,850
Remote Refrigeration with Indoor Condensing Unit	Contact Factory
Remote Refrigeration without Compressor Supplied (EEV Included)	Deduct 690
Condensate Evaporator Assembly – Required if No Drain Available (Field Install Kit, Dedicated 120V 15A Circuit Required) (Remote Only)	483
Condensate Pump – Standard on All Remote Models	N/C
Bumper (Black)	425
Alternate Power Supply:	
220-240V 50HZ 1PH	1,132
Slanted Milk Crate Insert	325



Model LMDM4878SC

HIGH PROFILE SELF-SERVE REFRIGERATED MULTIPURPOSE MILK MERCHANDISERS

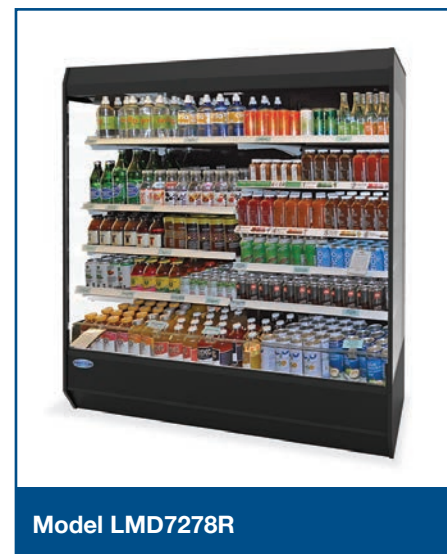
NEW

When ordering, specify finish.

MODEL	DESCRIPTION (L X D X H)	ELECTRICAL	SHIP WEIGHT	LIST PRICE
HIGH PROFILE – REFRIGERATED ❄️				
LMDM4878SC	49.7" x 40.2" x 78"	208-240/60/1	1150	\$ 25,600
ACCESSORIES For Refrigerated Multipurpose Milk Self-Serve Merchandisers				
Laminated Finish (Standard Colors: Walnut, Natural Oak, Cherry, Beige, White, Black)				N/C
Special Color Laminate (Formica® and Wilsonart® Standard Offerings)				565
Stainless Steel in Lieu of Laminate				1,631
Black Interior (Including Shelving)				N/C
Stainless Steel Interior (Including Shelving)				624
Additional Shelf (LED Lighted – 3500K) If Using Single Layer of Milk Crates				525
17" additional shelf w/ LED Light				
Stainless				255
Black				175
White				195
19.5" additional shelf w/ LED light				
Stainless				325
Black				199
White				215
Roll-down Security Cover (White)				3,800
Removable Security Cover – Black Polycarbonate				1,149
Reflective End Glass (Pair)				448
Graphic Wrap			Contact Factory	
Sliding Rear Access Doors (Clear or reflective) (Includes Door Lock)				1,888

SELF-SERVE REFRIGERATED MULTI-DECK MERCHANDISERS *(Remote Only) When ordering, specify finish.*

MODEL	DESCRIPTION (L X D X H)	ELECTRICAL	SHIP WEIGHT	LIST PRICE
HIGH PROFILE — REFRIGERATED ❄️				
LMD4878R	49.8" x 38" x 78"	120/60/1	1,011	\$ 21,486
LMD7278R	73.8" x 38" x 78"	120/60/1	1,275	26,498
LMD9678R	97.8" x 38" x 78"	120/60/1	1,538	30,846
ACCESSORIES <i>For High Profile Self-Serve Merchandisers</i>				
LED LIGHTING (Top and Below Shelf Lighting – 3500K)				N/C
Black Interior (Includes Shelving)				N/C
Stainless Steel Interior (Includes Shelving)				3,974
Laminated Finish (Standard Colors: Walnut, Natural Oak, Cherry, Beige, White, Black)				N/C
Special Color Laminate (Formica® and Wilsonart® Standard Offering)				565
Stainless Steel Finish in Lieu of Laminate				
48"				807
72"				1,146
96"				1,533
Stainless Shelves in lieu of Black (per tier)				
48"				60
72"				185
96"				250
Top Mount Shroud (For top condensing unit option)				
Black				604
Stainless Steel				604
Remote Refrigeration with Indoor Condensing Unit			Contact Factory	
Remote Refrigeration with Outdoor Condensing Unit				
LMD4878R				4,395
LMD7278R				4,850
LMD9678R				5,050
Remote Refrigeration with Top Mount Condensing Unit (Contact Factory for electrical requirements)				3,974
Security Cover (Black Finish or Aluminum Finish)				1,149
Reflective End Glass (Pair)				866
Condensate Pump				231
Deli Meat Pegs - in lieu of shelves (per Tier)				541
White Top Canopy				N/C
Joining Kit For Continuous Line-ups				N/C
Product Mister (Comes as stainless steel interior)				
4'				6,599
6'				7,063
8'				7,356
Alternate Power Supply:				
220-240V 50HZ 1PH				1,083



Model LMD7278R



The Signature of Quality

2021 Price List

ISLAND MERCHANDISER – REFRIGERATED ❄️



Model IMSS60SC

MODEL	DESCRIPTION (L X D X H)	ELECTRICAL	SHIP WEIGHT	LIST PRICE
IMSS60SC-2	60" x 40" x 55"	208-240/60/1	860	\$ 31,318
IMSS60SC-3	60" x 40" x 60"	208-240/60/1	864	32,076
IMSS84SC-2	84" x 40" x 55"	208-240/60/1	1,000	34,078
IMSS84SC-3	84" x 40" x 60"	208-240/60/1	1,112	34,836
IMSS120SC-2	120.5" x 40.5" x 57"	208-240/60/1	1,375	45,427
IMSS120SC-3	120.5" x 40.5" x 62"	208-240/60/1	1,569	47,423

ACCESSORIES *For Island Merchandiser*

LED LIGHTING (Top and Below Shelf Lighting – 3500K)	N/C
Cart Bumper (Black)	928
Cord and Plug	263
Casters (Recessed or 4") (Includes Cord and Plug)	917
Legs (6")	654
Model IMSS60SC-2, IMSS84SC-2, IMSS120SC-2 & Remote Models come standard with Condensate Pump	N/C
Condensate Evaporator Assembly – Required if No Drain Available (Field Install Kit, Dedicated 240V 20A Circuit Required)	483
Laminated Band (Standard Colors: Walnut, Natural Oak, Cherry, Beige, White, Black)	N/C
Special Base Color-Powder Coat Finish	820
Special Color Laminated Band (Formica® and Wilsonart® Standard Offerings)	380
Stainless Steel Top	
IMSS60	2,329
IMSS84	2,329
IMSS120	2,849
Stainless Steel Band	
IMSS60	179
IMSS84	179
IMSS120	259
Stainless Steel Base	
IMSS60	239
IMSS84	239
IMSS120	369
Stainless Steel Tower and Stainless Shelves	
IMSS60	539
IMSS84	539
IMSS120	1,429
Remote Refrigeration without Compressor Supplied (EEV Included)	Deduct 690
Remote Refrigeration with Outdoor Condensing Unit	
IMSS60	4,850
IMSS84	4,850
IMSS120	5,050
Remote Refrigeration with Indoor Condensing Unit	Contact Factory
Top-Mounted Electrical (Cord Not Available)	N/C
Top-Mounted Refrigeration (Remote Only)	N/C
Top-Mounted Condensate Pump Drain Line	N/C
Top Chase Kit Connections (Black Texture/White 4" x 4" x 5' Long)	271
Price Tag Molding (60", 84")	106
Price Tag Molding (120")	212
Graphic Wrap Band/Base	Contact Factory
Condenser Air Filter	240
Alternate Power Supply:	
220-240V 50HZ 1PH	1,083

END CAP – REFRIGERATED ❄️

MODEL	DESCRIPTION (L X D X H)	ELECTRICAL	SHIP WEIGHT	LIST PRICE
ECSS40SC	40" x 40" x 60"	208-240/60/1	743	\$ 28,327
ECSS60SC	60" x 40" x 60"	208-240/60/1	937	31,176

ACCESSORIES *For End Cap*

LED Lighting (Top and Below Shelf Lighting – 3500K)	N/C
Cart Bumper (Black)	617
Casters (Recessed or 4") (Includes Cord and Plug)	917
Legs (6")	654
Cord and Plug	263
Condensate Evaporator Assembly – Required if No Drain Available (Field Install Kit, Dedicated 120V 15A Circuit Required)	483
Condensate Evap Assembly -High Capacity (ECSS60 only) (240V 20A Circuit Required)	690
Laminated Band (Standard Colors: Walnut, Natural Oak, Cherry, Beige, White, Black)	N/C
Special Color Laminated Band (Formica® and Wilsonart® Standard Offering)	379
Stainless Steel Top	1,429
Stainless Steel Band	125
Stainless Steel Base	175
Stainless Steel Tower and Stainless Shelves	629
Remote Refrigeration without Compressor Supplied (EEV Included)	Deduct 690
Remote Refrigeration with Outdoor Condensing Unit	4,850
Remote Refrigeration with Indoor Condensing Unit	Contact Factory
Top-Mounted Electrical (Cord Not Available)	N/C
Top-Mounted Refrigeration (Remote Only)	N/C
Top-Mounted Condensate Pump Drain Line	N/C
Top Chase Kit Connections (Black Texture/White 4" x 4" x 5' Long)	271
Price Tag Molding	106
Graphic Wrap Band/Base	Contact Factory
Graphic Wrap Band/Base/Canopy	Contact Factory
Condenser Air Filter	240
Alternate Power Supply:	
220-240V 50HZ 1PH	1,083

**Model ECSS40SC**



The Signature of Quality

2021 Price List

WALL DISPLAYS – NON-REFRIGERATED SELF-SERVE ^{Nº}

MODEL	DESCRIPTION (L X D X H)	ELECTRICAL	SHIP WEIGHT	LIST PRICE
-------	-------------------------	------------	-------------	------------

FULL PAN

WDC4276SS	42" x 29.75" x 76"	120/60/1	708	\$ 11,886
-----------	--------------------	----------	-----	-----------

ACCESSORIES *For Full-Pan Wall Displays*

LED Top Light (3500K)				N/C
Standard Painted Finish White or Black				N/C
Special Painted Finish (in lieu of Standard White or Black)				Contact Factory
Mirrored Ends				446
LED Lights – 3500K (Below Shelves)				560
Black trim				384
Black interior including shelves				820
Casters (Recessed)				654
Alternate Power Supply:				
220-240V 50HZ 1PH				500

WALL DISPLAYS – NON-REFRIGERATED SELF-SERVE ^{Nº}

MODEL	DESCRIPTION (L X D X H)	ELECTRICAL	SHIP WEIGHT	LIST PRICE
-------	-------------------------	------------	-------------	------------

HALF PAN

WDC42	42" x 30" x 62"	120/60/1	556	7,861
-------	-----------------	----------	-----	-------

ACCESSORIES *For Floor Displays*

LED Vertical Lights – 3500K (Includes Cord and Plug)				888
Recessed Casters or Legs				654
Laminated Base (Standard Colors: Walnut, Natural Oak, Cherry, Beige, White, Black)				N/C
Special Color Laminated Base (Formica® and Wilsonart® Standard Offerings)				407
Mirrored Ends (Pair)				459
Rear Sliding Glass Doors				1,518
*Cord and Plug Not Available without Lights				
Alternate Power Supply:				
220-240V 50HZ 1PH				500
Black interior including shelves				633



Model WDC4276SS



Model WDC42

HYBRID MERCHANDISERS

MODEL	DESCRIPTION (L X D X H)	ELECTRICAL	SHIP WEIGHT	LIST PRICE
-------	-------------------------	------------	-------------	------------

SERVICE REFRIGERATED OVER SELF-SERVE REFRIGERATED ❄️

CRR3628/RSS3SC	36.25" x 43.25" x 72.5"	120/60/1	847	\$ 27,276
CRR4828/RSS4SC	48" x 43.25" x 72.5"	120/60/1	1,010	29,209

SERVICE NON-REFRIGERATED OVER SELF-SERVE REFRIGERATED N° ❄️

CD3628/RSS3SC	36.25" x 39" x 69.75"	120/60/1	847	20,552
CD4828/RSS4SC	48" x 39" x 69.75"	120/60/1	1,010	21,228

SELF-SERVE NON-REFRIGERATED OVER SELF-SERVE REFRIGERATED N° ❄️

CD3628SS/RSS3SC	36.25" x 39" x 69.75"	120/60/1	764	22,698
CD4828SS/RSS4SC	48" x 39" x 69.75"	120/60/1	900	23,435

SERVICE HOT OVER SELF-SERVE REFRIGERATED 🔥 ❄️

CH3628/RSS3SC	36.25" x 39" x 69.75"	120/60/1	790	23,379
CH4828/RSS4SC	48" x 39" x 69.75"	120/60/1	939	24,330

SELF-SERVE HOT OVER SELF-SERVE REFRIGERATED 🔥 ❄️

CH3628SS/RSS3SC	36.25" x 39" x 69.75"	120/60/1	790	24,073
CH4828SS/RSS4SC	48" x 39" x 69.75"	120/60/1	935	24,830

ACCESSORIES For Hybrid Merchandisers

LED Lighting (Top and Below Shelf Lighting – 3500K) (Not Available on Hot)	N/C
----------------------------------------------------------------------------	-----

For Top Display

Glass Shelves (For Refrigerated and Non-Refrigerated)	330
Reflective Ends (Pair)	470
Reflective Rear Doors (3' and 4')	824

For Self-Serve Refrigerated Base

Energy Saving Night Curtain	397
Stainless Steel Trim - in lieu of black	741
Laminated Finish (Standard Colors: Walnut, Natural Oak, Cherry, Beige, White, Black)	N/C
Special Color Laminate (Formica® and Wilsonart® Standard Offerings)	417
Stainless Steel Base in Lieu of Laminate	1,524
Mirrored Interior Ends (Pair)	470
Reflective End Glass (Pair)	448
Rear Door, Lower Unit not available with CRR Top	1,524
Security Night Cover (Black Poly Carbonate)	1,052
Stainless Steel Steps in Lieu of Shelves	584
Casters	654



Model CRR3628/RSS3SC



Model CD3628SS/RSS3SC



Model CH3628/RSS3SC



The Signature of Quality

2021 Price List

CONVERTIBLE SERVICE OVER REFRIGERATED SELF-SERVE

MODEL	DESCRIPTION (L X D X H)	ELECTRICAL	SHIP WEIGHT	LIST PRICE
SSRC2452	24" x 34" x 52"	120/60/1	480	\$ 19,469
SSRC3652	36" x 34" x 52"	120/60/1	631	21,168
SSRC5052	50" x 34" x 52"	208-240/60/1	782	22,676
SSRC5952	59" x 34" x 52"	208-240/60/1	836	24,201
SSRC7752	77" x 34" x 52"	208-240/60/1	1,018	24,864

ACCESSORIES For Service Top Display

LED Lighting (Top and Below Shelf Lighting – 3500K)	N/C
Reflective Rear Doors	784
Glass Shelves (One Tier)	633

ACCESSORIES For Self-Serve Refrigerated Base

Casters (2 1/2" Recessed or 4" Casters) (Includes Cord and Plug)	917
Legs (6")	654
Seismic Legs	748
Cord and Plug	263
Laminated Base (Standard Colors: Walnut, Natural Oak, Cherry, Beige, White, Black)	N/C

Special Color Laminated Base (Formica® and Wilsonart® Standard Offerings)	397
------------------------------------------------------------------------------	-----

Stainless Steel Base in Lieu of Laminate	1,008
------------------------------------------	-------

Stainless Steel Interior Includes Steps	762
Energy Saving Night Curtain	379
Security Night Cover (Black Poly Carbonate)	1,149
Solid Rear Sliding Access Doors – Bottom Section	1,524
Remote Refrigeration without Compressor Supplied (EEV Included)	Deduct 425
Remote Refrigeration with Indoor Condensing Unit	Contact Factory
Remote Refrigeration with Outdoor Condensing Unit	

SSRC2452	3,585
----------	-------

SSRC3652	3,585
----------	-------

SSRC5052	3,585
----------	-------

SSRC5952	4,145
----------	-------

SSRC7752	4,145
----------	-------

Rear Wrapping Board	590
---------------------	-----

Black Wire Shelf (or Glass) with Light in Lieu of Display Steps	205
-----------------------------------------------------------------	-----

Reflective End Glass (Top and Bottom Sections) (Pair)	784
-------------------------------------------------------	-----

Front Basket for Non-Refrigerated Products	415
--------------------------------------------	-----

Condensate Pump (In Lieu of Pan) (Standard on remote cases)	N/C
-------------------------------------------------------------	-----

Alternate Power Supply:	
220-240V 50HZ 1PH	1,083

Condensate Evaporator Assembly (Dedicated 120V 15A Circuit Required) (Remote Only)	483
------------------------------------------------------------------------------------	-----



Model SSRC5952



Model SSRC5952

SELF-SERVE REFRIGERATED PREPARED FOODS MERCHANDISER ❄️

MODEL	DESCRIPTION (L X D X H)	ELECTRICAL	SHIP WEIGHT	LIST PRICE
SSRPF3652	36" x 34" x 52"	120/60/1	590	\$ 18,909
SSRPF5052	50" x 34" x 52"	208-240/60/1	765	19,611
SSRPF5952	59" x 34" x 52"	208-240/60/1	845	21,642
SSRPF7752	77" x 34" x 52"	208-240/60/1	1,010	22,854

ACCESSORIES

LED Lighting (Top and Below Shelf Lighting – 3500K)	N/C
Casters 4" or 2 1/2" Recessed (Includes Cord and Plug)	917
Legs (6")	654
Seismic Legs	748
Cord and Plug	263
Laminated Base (Standard Colors: Walnut, Natural Oak, Cherry, Beige, White, Black)	N/C
Special Color Laminated Base (Formica® and Wilsonart® Standard Offerings)	397
Stainless Steel Base in Lieu of Laminate	1,008
White Interior (Includes Shelves)	N/C
Stainless Steel Interior Includes Shelves	762
Security Night Cover (Black Poly Carbonate)	1,149
Remote Refrigeration with Outdoor Condensing Unit	
SSRPF3652	3,585
SSRPF5052	3,585
SSRPF5952	4,145
SSRPF7752	4,145
Remote Refrigeration with Indoor Condensing Unit	Contact Factory
Remote Refrigeration without Compressor Supplied (EEV Included)	Deduct 425
Solid Rear Sliding Access Doors	1,524
Glass Shelves with Light in Lieu of Solid Shelves (Per Tier)	205
Stainless Steel Shelves (In Lieu of Black Shelves) (Per Tier) 36", 50", and 59"	377
Stainless Steel Shelves (In Lieu of Black Shelves)(Per Tier) 77"	754
Reflective End Glass	784
Energy Saving Night Curtain	379
Front Basket for Non-Refrigerated Products	415
Condensate Pump (In Lieu of Pan) (remote standard with Cond. Pump)	N/C
Field install Condensate Pan (120V / 15A) (Remote Only)	250
Joining Kit for Continuous Line-ups (N/A with Casters)	N/C
Rear Vent Exhaust Extension (Adds 4" to Rear of Case) (Rear Doors N/A)	130
Alternate Power Supply:	
220-240V 50HZ 1PH	1,083



Model SSRPF5952



The Signature of Quality

2021 Price List

VERSATILE SERVICE TOP OVER REFRIGERATED SELF-SERVE MERCHANDISER ❄️



Model SSRVS5942

MODEL	DESCRIPTION (L X D X H)	ELECTRICAL	SHIP WEIGHT	LIST PRICE
SSRVS3642	36" x 34" x 42"	120/60/1	590	\$ 17,164
SSRVS5042	50" x 34" x 42"	208-240/60/1	735	17,840
SSRVS5942	59" x 34" x 42"	208-240/60/1	845	19,370
SSRVS7742	77" x 34" x 42"	208-240/60/1	975	20,721

ACCESSORIES *For Self-Serve Refrigerated Base*

LED Lighting (Top and Below Shelf Lighting – 3500K)	N/C
Casters (Recessed) (Includes Cord and Plug)	917
Legs (6")	654
Seismic Legs	748
Cord and Plug	263
Laminated Base (Standard Colors: Walnut, Natural Oak, Cherry, Beige, White, Black)	N/C
Special Color Laminated Base (Formica® and Wilsonart® Standard Offerings)	397
Stainless Steel Base in Lieu of Laminate	1,008
White Interior (Includes Shelves)	N/C
Stainless Steel Interior (Includes Shelves)	762
Security Night Cover (Black Poly Carbonate)	1,149
Solid Rear Sliding Access Doors for Bottom Section	1,524
Glass Shelves with Light in Lieu of Solid Shelves (Per Tier)	205
Remote Refrigeration without Compressor Supplied (EEV Included)	
Remote case Standard with Condo Pump	Deduct 425
Remote Refrigeration with Outdoor Condensing Unit	
Remote case Standard with Condo Pump	
SSRVS3642	3,585
SSRVS5042	3,585
SSRVS5942	4,145
SSRVS7742	4,145
Remote Refrigeration with Indoor Condensing Unit	
Remote case Standard with Condo Pump	Contact Factory
Reflective End Glass (Pair)	784
Energy Saving Night Curtain	379
Front Basket for Non-Refrigerated Products	415
Condensate Pump (In Lieu of Pan) Remote case Standard with Condo Pump	N/C
Field install Condensate Pan (120V / 15A) (Remote Only)	250
Joining Kit for Continuous Line-ups (N/A with Casters)	N/C
Sneeze Guard with Top Service Shelf	
36", 50"	1,211
59", 77"	1,629
Sneeze Guard with Two Bakery Shelves (Night Curtain N/A with Sneeze Guard/Bakery Shelves)	
36", 50"	3,363
59", 77"	4,689
Rear Wrapping Board	590
Rear Vent Exhaust Extension (Adds 4" to Rear of Case 42" Only)	
Not Available with Rear Door Option	130
Alternate Power Supply:	
220-240V 50HZ 1PH	1,083

REFRIGERATED SELF-SERVE UNDER-COUNTER CASE

MODEL	DESCRIPTION (L X D X H)	ELECTRICAL	SHIP WEIGHT	LIST PRICE
SSRVS3633	36" x 34" x 32.63"	120/60/1	550	\$ 14,384
SSRVS5033	50" x 34" x 32.63"	120/60/1	590	15,698
SSRVS5933	59" x 34" x 32.63"	208-240/60/1	676	17,042
SSRVS7733	77" x 34" x 32.63"	208-240/60/1	980	18,233

ACCESSORIES For Self-Serve Refrigerated Base

LED Top Light (3500K)	N/C
Casters (Recessed or 4") (Includes Cord and Plug) (Recessed Caster not available on SSRVS3633 w/ FAD)	917
Legs (6")	654
Seismic Legs	748
Cord and Plug	263
Rear Doors	1,524
Laminated Finish (Standard Colors: Walnut, Natural Oak, Cherry, Beige, White, Black)	N/C
Special Color Laminate Base (Formica® and Wilsonart® Standard Offerings)	397
Stainless Steel Base In Lieu of Laminate	1,008
White Interior (Includes Step Riser)	N/C
Stainless Steel Interior (Includes Step Riser)	762
Security Night Cover (Black Poly Carbonate)	1,149
Remote Refrigeration without Compressor Supplied (EEV Included) Standard with Condo Pump	Deduct 425
Remote Refrigeration with Indoor Condensing Unit Standard with Condo Pump	Contact Factory
Remote Refrigeration with Outdoor Condensing Unit Standard with Condo Pump	
SSRVS3633	3,585
SSRVS5033	3,585
SSRVS5933	4,145
SSRVS7733	4,145
Black Metal Shelf in Lieu of Display Steps (includes light)	205
Energy Saving Night Curtain	379
Front Basket Non-Refrigerated Products	415
Condensate Pump (In Lieu of Pan)	N/C
Joining Kit for Continuous Line-ups (N/A with Casters)	N/C
Reflective End Glass	784
Solid Ends in Lieu of Glass (Specify Curved or Square Ends)	N/C
Field install Condensate Pan (120V / 15A) (Remote Only)	250



Model SSRVS5933
Shown with optional shelf



Model SSRVS
Squared End Under Counter Option



The Signature of Quality

2021 Price List

SANDWICH OR SALAD PREP OVER REFRIGERATED SELF-SERVE ❄️

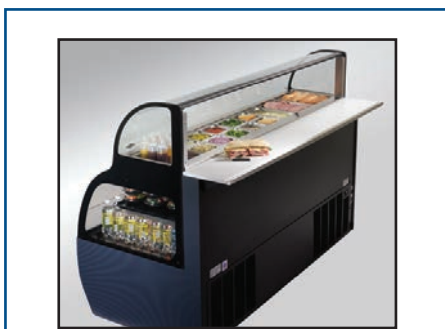
MODEL	DESCRIPTION (L X D X H)	ELECTRICAL	SHIP WEIGHT	LIST PRICE
SSRSP5052	50" x 34" x 52"	208-240/60/1	710	\$ 23,161
SSRSP5952	59" x 34" x 52"	208-240/60/1	735	24,760
SSRSP7752	77" x 34" x 52"	208-240/60/1	940	25,456

ACCESSORIES For Self-Serve Refrigerated Base

LED Light (3500K)	N/C
Casters (Recessed) (Includes Cord and Plug)	917
Legs (6")	654
Seismic Legs	748
Cord and Plug	263
Sound Deadening Kit	433
Laminated Base (Standard Colors: Walnut, Natural Oak, Cherry, Beige, White, Black)	N/C
Special Color Laminated Base (Formica® and Wilsonart® Standard Offerings)	397
Stainless Steel Base in Lieu of Laminate	1,008
Stainless Steel Interior Includes Shelf	762
Security Night Cover (Black Poly Carbonate)	1,149
Solid Rear Sliding Access Doors for Bottom Section	1,524
Remote Refrigeration without Compressor Supplied (EEV Included) Standard with Condo Pump	Deduct 425
Remote Refrigeration with Outdoor Condensing Unit Standard with Condo Pump	
SSRSP5052	3,585
SSRSP5952	4,145
SSRSP7752	4,145
Remote Refrigeration with Indoor Condensing Unit Standard with Condo Pump	Contact Factory
Glass Shelf with Light in Lieu of Black Shelves	205
Reflective End Glass (Top and Bottom Sections) (Pair)	784
Two-Tier Display Riser in Lieu of Shelf	173
Rear Refrigeration Storage (Includes Rear Sliding Door and Storage Enclosure)	1,873
Front Basket for Non-Refrigerated Products	395
Condensate Pump (In Lieu of Pan)	N/C
Field install Condensate Pan (120V / 15A) (Remote Only)	250
Joining Kit for Continuous Line-ups (N/A with Casters)	N/C
Alternate Power Supply:	
220-240V 50HZ 1PH	1,083



Model SSRSP5952



Model SSRSP5952
LED lighting lower section only

COUNTERTOP MERCHANDISERS

MODEL	DESCRIPTION (L X D X H)	ELECTRICAL	SHIP WEIGHT	LIST PRICE
-------	-------------------------	------------	-------------	------------

REFRIGERATED – SELF-CONTAINED REAR MOUNT ❄️

CRR3628	36" x 29.7" x 28"	120/60/1	390	\$ 12,685
CRR4828	48" x 29.7" x 28"	120/60/1	450	14,115

REFRIGERATED SELF-SERVE – SELF-CONTAINED REAR MOUNT ❄️

CRR3628SS	36" x 29.7" x 28"	120/60/1	400	13,052
CRR4828SS	48" x 29.7" x 28"	120/60/1	460	14,466

REFRIGERATED – SELF-CONTAINED BOTTOM MOUNT ❄️

CRB3628	36" x 29.7" x 28"	120/60/1	390	12,685
CRB4828	48" x 29.7" x 28"	120/60/1	450	14,115

REFRIGERATED SELF-SERVE – SELF-CONTAINED BOTTOM MOUNT ❄️

CRB3628SS	36" x 29.7" x 28"	120/60/1	497	13,052
CRB4828SS	48" x 29.7" x 28"	120/60/1	460	14,466

NON-REFRIGERATED №

CD3628	36" x 29.7" x 28"	120/60/1	275	6,099
CD4828	48" x 29.7" x 28"	120/60/1	350	6,343

NON-REFRIGERATED – SELF-SERVE №

CD3628SS	36" x 29.7" x 28"	120/60/1	275	8,202
CD4828SS	48" x 29.7" x 28"	120/60/1	350	8,456

HOT 🔥

CH2428	24" x 29.7" x 28"	120/60/1	290	8,402
CH3628	36" x 29.7" x 28"	120/60/1	333	8,870
CH4828	48" x 29.7" x 28"	120/60/1	375	9,338

HOT – SELF-SERVE 🔥

CH2428SSD	24" x 29.7" x 28"	120/60/1	290	9,244
CH3628SSD	36" x 29.7" x 28"	120/60/1	333	9,602
CH4828SSD	48" x 29.7" x 28"	120/60/1	375	9,818

ACCESSORIES For Signature Series Counter Top

LED Lighting (Top and Below Shelf Lighting – 3500K) (Not Available on Hot Case)	N/C
Glass Shelves (Set) - Not Available on Hot Case	314
Solid Insulated End Panel (For Hot Case Lineup with Refrigerated / Ambient Case)	477
Reflective Ends (Pair)	446
Reflective Rear Doors	784
Remote Refrigeration without Compressor Supplied (EEV Included)	Deduct 425
Remote Refrigeration with Outdoor Condensing Unit	3,460
Remote Refrigeration with Indoor Condensing Unit	Contact Factory
Front Mount Control (On Hot Cases Only)	462
Pedestal and Cutting Board 36" dry only to match refrigerated case	550
Pedestal and Cutting Board 48" dry only to match refrigerated case	589

HIGH PROFILE SELF-SERVE COUNTER TOP MERCHANDISERS When ordering, specify finish.

MODEL	DESCRIPTION (L X D X H)	ELECTRICAL	SHIP WEIGHT	LIST PRICE
-------	-------------------------	------------	-------------	------------

HIGH PROFILE – REFRIGERATED ❄️

TSSM2454	24.71" x 28.45" x 53.71"	120/60/1	400	9,800
----------	--------------------------	----------	-----	-------

**Comes standard with condo pump or direct drain

ACCESSORIES For Counter Top Self-Serve Merchandisers

White Powder Coated Exterior Finish, Interior and Shelving	N/C
Stainless Steel Exterior Finish, Interior and Shelving	1,008



Model CRB4828SS



Model CD4828SS



Model CH3628SS



TSSM2454 Specialty Merchandiser

NEW



The Signature of Quality®

2021 Price List

Chocolate and Confectionery Cases

MODEL	DESCRIPTION (L X D X H)	ELECTRICAL	SHIP WEIGHT	LIST PRICE
CLIMATE CONTROLLED ❄️				
FCCR-4	48" x 24" x 48"	120/60/1	635	\$ 22,909
FCCR-5	60.75" x 24" x 48"	120/60/1	750	23,935
FCCR-6	72" x 24" x 48"	120/60/1	850	24,728
NON-REFRIGERATED N°				
FCC-4	48" x 24" x 48"	120/60/1	535	19,377
FCC-5	60.75" x 24" x 48"	120/60/1	640	20,345
FCC-6	72" x 24" x 48"	120/60/1	695	21,009

****Gold finish no longer available. Standard case will come in Stainless Steel**

ACCESSORIES

LED Lighting (Top and Below Shelf Lighting – 4000K)	N/C
Casters (Includes Cord and Plug)	917
Legs (6")	654
Cord and Plug	263
Laminated Base (Standard Color Black)	N/C
Special Color Laminated Base (Formica® and Wilsonart® Standard Offerings)	417
Silver Trim Standard (Gold Trim is no longer available)	N/C
Top Rear Wrap Board	620



Model FCCR-4



Hinged front glass tilts forward for easy cleaning.



The Signature of Quality®

Elements Bakery and Deli Cases

MODEL	DESCRIPTION (L X D X H)	ELECTRICAL	SHIP WEIGHT	LIST PRICE
REFRIGERATED BAKERY ❄️				
ECGR50	50" x 35" x 48"	120/60/1	640	\$ 15,291
ECGR59	59" x 35" x 48"	120/60/1	765	17,041
ECGR77	77" x 35" x 48"	120/60/1	930	17,994
NON-REFRIGERATED BAKERY N°				
ECGD50	50" x 35" x 48"	120/60/1	500	10,870
ECGD59	59" x 35" x 48"	120/60/1	535	11,253
ECGD77	77" x 35" x 48"	120/60/1	715	11,882
REFRIGERATED DELI ❄️				
ECGR50CD	50" x 35" x 48"	120/60/1	620	14,676
ECGR59CD	59" x 35" x 48"	120/60/1	650	15,072
ECGR77CD	77" x 35" x 48"	120/60/1	870	16,376
*Optional Field Install Caster Kit - Shipped Loose				366

Elements Counter Top Merchandisers

MODEL	DESCRIPTION (L X D X H)	ELECTRICAL	SHIP WEIGHT	LIST PRICE
REFRIGERATED REAR MOUNT ❄️				
ERR3628	36" x 29.7" x 28"	120/60/1	390	10,160
ERR4828	48" x 29.7" x 28"	120/60/1	450	11,394
REFRIGERATED SELF-SERVE REAR MOUNT ❄️				
ERR3628SS	36" x 29.7" x 28"	120/60/1	400	10,620
ERR4828SS	48" x 29.7" x 28"	120/60/1	460	11,839
HOT 🔥				
EH2428	24" x 29.7" x 28"	120/60/1	290	6,947
EH3628	36" x 29.7" x 28"	120/60/1	297	7,113
EH4828	48" x 29.7" x 28"	120/60/1	375	7,285
HOT SELF-SERVE 🔥				
EH2428SSD	24" x 29.7" x 28"	120/60/1	290	7,419
EH3628SSD	36" x 29.7" x 28"	120/60/1	333	7,713
EH4828SSD	48" x 29.7" x 28"	120/60/1	375	8,006

Elements Specialty Display Cases

MODEL	DESCRIPTION (L X D X H)	ELECTRICAL	SHIP WEIGHT	LIST PRICE
REFRIGERATED SELF-SERVE HIGH PROFILE ❄️				
ERSSHP378SC	36.5" x 34.25" x 78"	208-240/60/1	794	15,109
ERSSHP478SC	47" x 34.25" x 78"	208-240/60/1	940	15,791
ERSSHP678SC	71" x 34.25" x 78"	208-240/60/1	1,235	18,186
REFRIGERATED SELF-SERVE LOW PROFILE ❄️				
ELPRSS3	34.6" x 34" x 46"	120/60/1	469	9,694
ELPRSS4	46.6" x 34" x 46"	120/60/1	576	9,860
ELPRSS6	70.6" x 34" x 46"	208-240/60/1	750	12,165
CONVERTIBLE SERVICE HIGH PROFILE SELF-SERVE ❄️				
ESSRC5052	50" x 34" x 52"	208-240/60/1	720	19,034
ESSRC5952	59" x 34" x 52"	208-240/60/1	845	20,773
ESSRC7752	77" x 34" x 52"	208-240/60/1	970	21,408
*Optional Field Install Caster Kit - Shipped Loose				384
REFRIGERATED SELF-SERVE ISLAND ❄️				
EIMSS60SC-3	60" x 40" x 60"	208-240/60/1	910	28,730
EIMSS84SC-3	84" x 40" x 60"	208-240/60/1	1375	31,157
Condensate Evaporator Assembly Field Install Kit (Dedicated 120V 15A Circuit Required)				483
*Optional Field Install Caster Kit - Shipped Loose				384





The Signature of Quality

OPTIONAL SALES ACCESSORIES



Price Tag Molding - RSSM



Rear Sliding Doors - RSSM



Swing/Hinged Doors - RSSM



Polycarbonate Security Cover - RSSM



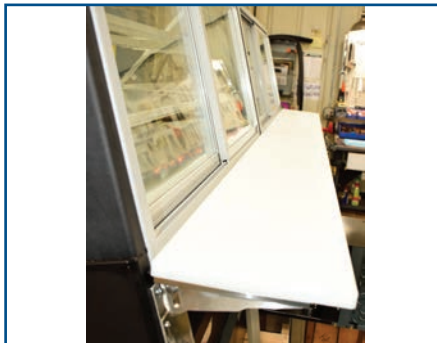
Reflective End - Straight Glass



Mirrored End - Curved Glass



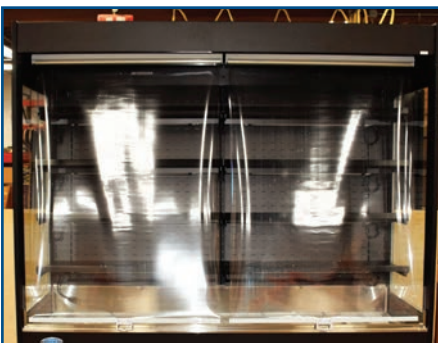
Step Riser - SSRVS



Cutting Board - Series 90



Clear Glass Square End - RSSM



Night Curtain - RSSM



Casters



Seismic Leg



Legs

WARRANTIES

FEDERAL'S STANDARD LIMITED WARRANTIES: ONE YEAR PARTS/ONE YEAR LABOR/FIVE YEAR MOTOR COMPRESSOR

PARTS — ONE YEAR: Federal Industries warrants to the original purchasers, the equipment manufactured by it to be free from defects in material and workmanship under normal use and service within 12 months from the date of original shipment from the factory.

Any items returned to the factory must be authorized by Federal's Customer Service Department and be shipped prepaid. Replacements will be shipped collect.

This warranty does not include any material which has been subject to misuse, neglect, damage in transit, accident, negligence, or alteration. Warranties do not cover: coated incandescent light bulbs, fluorescent lights, decorative heat lamp bulbs, coated halogen light bulbs, halogen heat lamp bulbs and LED light strips.

LABOR — ONE YEAR: Federal Industries warrants to the original purchasers, the equipment manufactured by it. Federal will for a period of 12 months from the date of original shipment from the factory pay the cost of labor for repairs and replacement of parts that it has determined to be defective.

This warranty does not include the cost of labor for initial installation, start-up, correction of improper installations, misapplications, repairs caused by abuse and negligence, modifications, normal adjustments, drive time to and from repair site, and Freon recovery. The cost of service labor reimbursed will be based on straight-time rate and reasonable time for the repair of the defect.

All service labor charges are subject to approval by Federal Industries Service Department.

MOTOR-COMPRESSOR — FIVE YEAR: Federal Industries warrants to the original purchasers that it will repair or exchange at our option, at any time during the five years following the date of original shipment from the factory a motor-compressor assembly of like design and capacity if the motor-compressor assembly or any part thereof is returned prepaid to nearest authorized jobber and is proved to our satisfaction to be inoperative due to defects in material or factory workmanship.

The term "motor-compressor assembly" consists of the stator, rotor, eccentric rod, eccentric shaft, piston, wrist pin, suction valve, discharge valve, and the cast housing in which these parts are enclosed.

This warranty does not apply to any electrical controls, condenser, evaporator, fan motors, overload switch, starting relay, temperature control, dryer, accumulator, or wiring harnesses. No claims can be made against this warranty for spoilage of product.

Replacement of the motor-compressor assembly must receive prior approval from Federal Industries Service Department.

This warranty does not apply to remote compressors furnished by Federal.

This warranty applies to the original motor compressor only.

GENERAL CONDITIONS: Federal Industries recommends that the installation, inspection, and start-up of refrigeration equipment be performed by a qualified refrigeration technician.

Federal Industries makes no other expressed or implied warranty, and no person or representative of the seller is authorized to add to the seller's liabilities in connection with its products other than what is expressed.

These warranties do not apply to remote motor compressor applications.

Warranties listed here are for equipment located inside the continental United States and Canada.

All service labor and/or parts charges are subject to approval by Federal Industries. Contact the service department in writing or call (608) 424-3331.

All claims must contain the following information:

- The model and serial number of the equipment.
- The date of the equipment failure and place of installation.
- The name and address of the agency which performed the service work.
- A complete description of the equipment failure, circumstances relating to that failure, parts replaced and itemized list of all labor charges incurred.

Federal Industries shall not be liable for any default or delay in performance caused by any contingency beyond its control.

Warranties do not include any food or business loss and transportation charges to or from Federal Industries factory.

Cases are designed to operate in an environment of 75°F ambient and 55% relative humidity.

TERMS OF SALE

1. PRICES. This price list supersedes all other price lists. Federal Industries reserves the right to change the price of the equipment without notice. All quotations for equipment shall be void if not accepted within 30 days.

2. DELIVERY. Shipping or delivery date is approximate. Seller will not be liable for failure to deliver due to strikes, suppliers' delays, changes requested by Buyer, or any causes beyond its control.

3. SHIPMENT. When possible, requested carrier will be used. Federal, however, reserves the right to ship via any responsible carrier. Shipping charges are payable by consignee and any claims arising as to such charges shall be resolved between the carrier and consignee.

4. DAMAGE. Claims for damage in transit must be made by the consignee with the carrier. Federal Industries assumes no responsibility for damages while in transit.

5. TAXES. Federal, state, city sales or use taxes are not included with these prices.

6. CANCELLATIONS. Buyer shall compensate Seller for all special items not normally stocked. Buyer shall also compensate Seller for special labor, material costs, special engineering, etc., on all cancelled orders.

7. RETURNED GOODS. No returns will be accepted without the prior approval of the Seller. A Return Authorization Number must be given by the Seller prior to Products being shipped, freight prepaid, by Buyer. Any damage in transit to Product being returned is Buyer's responsibility. All accepted returns are subject to a 35% restocking charge. Returns that have been approved by Seller must be received within (30) days after approval. Returns will not be considered after 90 days from assignment of RMA number. Returns must be made in original factory crate and must not have been used.



For all non-warranty parts sales visit:

1200 Greenbriar Drive • Addison, IL 60101 • Toll Free 800-438-8898 • Fax 888-513-0259 • Email: customerservice@partstown.com



FEDERAL INDUSTRIES
A Standex Company

215 FEDERAL AVENUE, BELLEVILLE, WISCONSIN 53508-9201

PHONE: 800-356-4206

EMAIL: geninfo@federalind.com

FAX: 608-424-3234

WEBSITE: www.federalind.com





The Signature of Quality

FEDERAL INDUSTRIES

A Standex Company

215 Federal Avenue, Belleville, Wisconsin 53508-9201

Phone: 800-356-4206 **Fax:** 608-424-3234

Email: Geninfo@Federalind.com **Website:** Federalind.com



Made in America